

Advanced Tissue Resection

iSnare™ Case Report Series • Report 4



“The iSnare provides two tools in one instrument, and they both deployed flawlessly in a retroversion maneuver.”

*Jerome D. Waye, M.D.
Chief of Gastrointestinal Endoscopy
Mt. Sinai Hospital*

Procedure

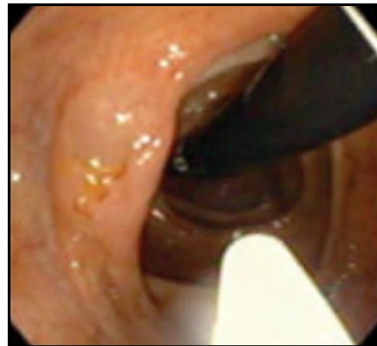
- Colonoscopy with polypectomy

Indications

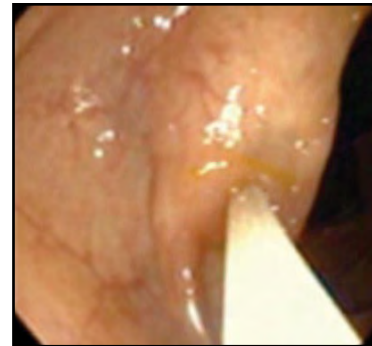
- Referral for transection of large difficult cecal polyp found on previous colonoscopy

Findings

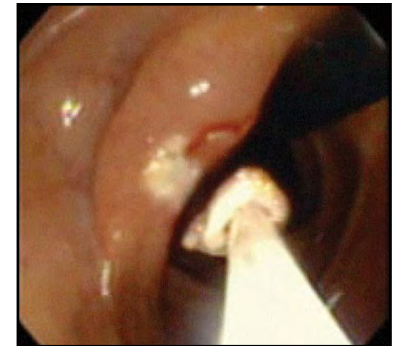
A large “ridge type” polyp located on a fold, proximal to the cecum was found. With the colonoscope in retroflexed position, the iSnare™ injection therapy and polypectomy system was used to inject and form a large submucosal saline bleb (one injection only) beneath the polyp. This was followed by 5 individual resections for piecemeal removal and subsequent retrieval of the tissue. Saline assisted polypectomy was achieved with one device passage; retroflexed scope position maintained. The excision site was clear of post polyp transection bleeding and tattooed for future surveillance purposes. The tissue was sent for histopathological evaluation. The remainder of the colon appeared normal. The patient tolerated the procedure well.



1. Retroflexed view of polyp



2. Retroflexed formation of saline bleb utilizing the iSnare's injection needle



3. Beginning piecemeal snare transection with the iSnare



listening...and delivering solutions

5976 Heisley Road
Mentor OH 44060

phone 440 / 639,4494

fax 440 / 639,4495

customer service 800 / 769,8226

www.usendoscopy.com

This case report is not intended to provide device or clinical instruction or intended to be a substitute for the Instructions For Use (IFU) which are packaged with the device. Please consult the IFU prior to using the iSnare™ device. iSnare™ is a trademark of US Endoscopy, patents pending.